



2009 Bombardier Challenger 605 S/N 5783



# 2009 Bombardier Challenger 605 S/N 5783

## HIGHLIGHTS

### PRO LINE 21 ADVANCED AVIONICS UPGRADE



### FANS ACTIVATION



### 12 PAX INTERIOR



### RECENT PAINT/INTERIOR

## AIRFRAME

TOTAL TIME SINCE NEW	6,152 Hours (as of September 15, 2019)
TOTAL LANDINGS SINCE NEW	2,147 Landings
ENTRY INTO SERVICE DATE	July 1, 2009
CURRENT LOCATION	Doha, Qatar
MAINTENANCE TRACKING	CAMP



## ENGINES

	Left Engine	Right Engine
DESCRIPTION	General Electric CF-34-3B	
SERIAL NUMBER(S)	950773	950774
TOTAL HOURS SINCE NEW	6,152 Hours	6,152 Hours
TOTAL CYCLES SINCE NEW	2,152 Cycles	2,152 Cycles
HSI DUE / OVERHAUL DUE	On Condition	
PROGRAM COVERAGE	GE OnPoint to be enrolled at delivery	



## APU

DESCRIPTION	Honeywell GTCP 36-150 (CL)
SERIAL NUMBER	P-232
APU TOTAL TIME SINCE NEW	6,219 Hours (July 2019)
HSI DUE / OVERHAUL DUE	On Condition



INFO@JETCRAFT.COM +1 919 941 8400 JETCRAFT.COM

Specifications and/or descriptions are provided as introductory information only and do not constitute representations or warranties. Verification of specifications remain the sole responsibility of purchaser. Photographs and images may have been modified to remove logos, registration marks, or other identifying information to protect the privacy of the Aircraft's current owner. The Aircraft is subject to prior sale, lease, and/or removal from the market without prior notice.

# 2009 Bombardier Challenger 605 S/N 5783

## AVIONICS

Type of Unit	Quantity	Description
EFIS (Electronic Flight Instrument System)	Quad	Collins AFD-5220E
FMS (Flight Management System)	Dual	Collins FMC-6200
CDU (Control Display Unit)	Dual	Collins CDU-6200
IRS (Inertial Reference System)	Dual	Honeywell LASEREF V
GPS (Global Positioning System)	Dual	Collins GPS-4000S
ADC (Air Data Computer)	Dual	Collins ADC-850E
DME (Distance Measuring Equipment)	Dual	Collins DME-4000
EFB (Electronic Flight Bag)	Single	Collins EFB-6000
A/P (Autopilot)	Single	Integrated
VHF NAV (Very High Freq. Navigation)	Dual	Collins NAV-4000
VHF COM (Very High Freq. Communications)	Triple	Collins VHF-4000E
HF COM (High Freq. Communications)	Dual	Collins HF-9031A
SATCOM (Satellite Communications)	Single	SAT-2200
SELCAL (Selective Calling System)	Single	Avtech CSD-714
WRADAR (Weather Radar)	Single	Collins RTA-800
RAD ALT (Radio Altimeter)	Dual	Collins ALT-4000
XPNDR (Transponder)	Dual	Collins TDR-94D w/ADS-B Out V2
GPWS (Ground Proximity Warning System)	Single	Honeywell MK-V (Enhanced GPWS)
TCAS (Traffic Collision Avoidance System)	Dual	Collins TDR-94D
CVR (Cockpit Voice Recorder)	Single	L3 FA2100
FDR (Flight Data Recorder)	Single	L3 FA2100
ELT (Emergency Locator Transmitter)	Single	Artex C406-N
LSS (Lighting Sensor System)	Single	L3 WX-1000E

## OTHER NOTABLE FEATURES

SB 605-34-019 R02 – Installation of the Pro Line 21 Advanced Upgrade

SB 605-23-008 R02 – Modification – Future Air Navigation System (FANS) – Upload of encryption application keys

SB 605-23-002 R04 – Datalink System – Installation of the datalink system

## ENTERTAINMENT

**DISPLAY / TV MONITOR(S)** Two (2) – 18.1 in. Bulkhead Monitors

**AIRSHOW SYSTEM** Equipped

**CABIN MANAGEMENT SYSTEM** Collins CES V6.3

**OTHER NOTABLE FEATURE(S)** Dual-disk CD/DVD multimedia player



## CONNECTIVITY

**HIGH SPEED INTERNET** Swift Broadband (SBB)

**WIRELESS LAN** Collins WLU-2100

**PHONE SYSTEM** Two (2) Digital, Enhanced Cordless Handsets



INFO@JETCRAFT.COM +1 919 941 8400 JETCRAFT.COM

Specifications and/or descriptions are provided as introductory information only and do not constitute representations or warranties. Verification of specifications remain the sole responsibility of purchaser. Photographs and images may have been modified to remove logos, registration marks, or other identifying information to protect the privacy of the Aircraft's current owner. The Aircraft is subject to prior sale, lease, and/or removal from the market without prior notice.

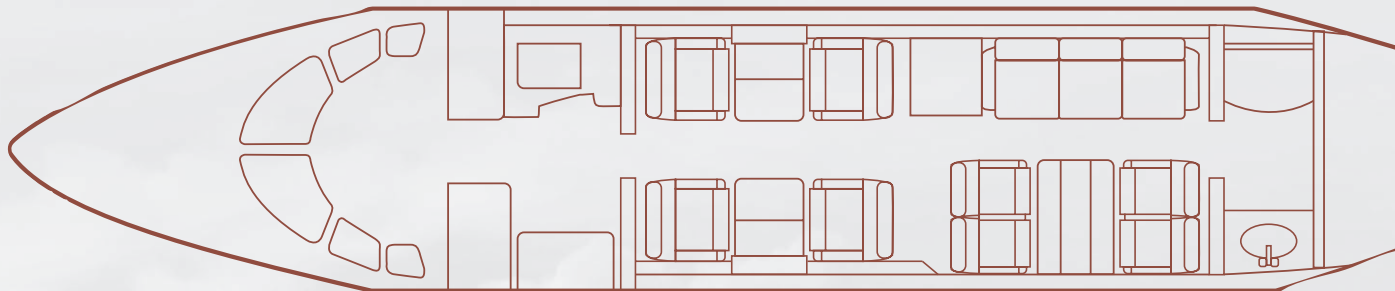
# 2009 Bombardier Challenger 605 S/N 5783

## INTERIOR

	Description
NUMBER OF PASSENGERS	Twelve (12)
GALLEY LOCATION	Forward Galley
FORWARD CABIN CONFIGURATION	Four (4) Place Executive Club with Pull-out Tables
AFT CABIN CONFIGURATION	Four (4) Place Divan opposite Four (4) Place Conference Group
LAVATORY LOCATION(S)	Aft Lavatory
JUMPSEAT	Forward Galley, Slide Out
GALLEY EQUIPMENT	Microwave Oven; Hi-Temp Oven; TIA Coffee Brewer; Aerolux Nespresso Coffee Maker
LAST REFURBISHED DATE	December 2017

## EXTERIOR

BASE PAINT COLOR(S)	White
STRIPE COLOR(S)	Maroon and Gray
LAST PAINTED DATE	December 2017





# 2009 Bombardier Challenger 605 S/N 5783





## 2009 Bombardier Challenger 605 S/N 5783



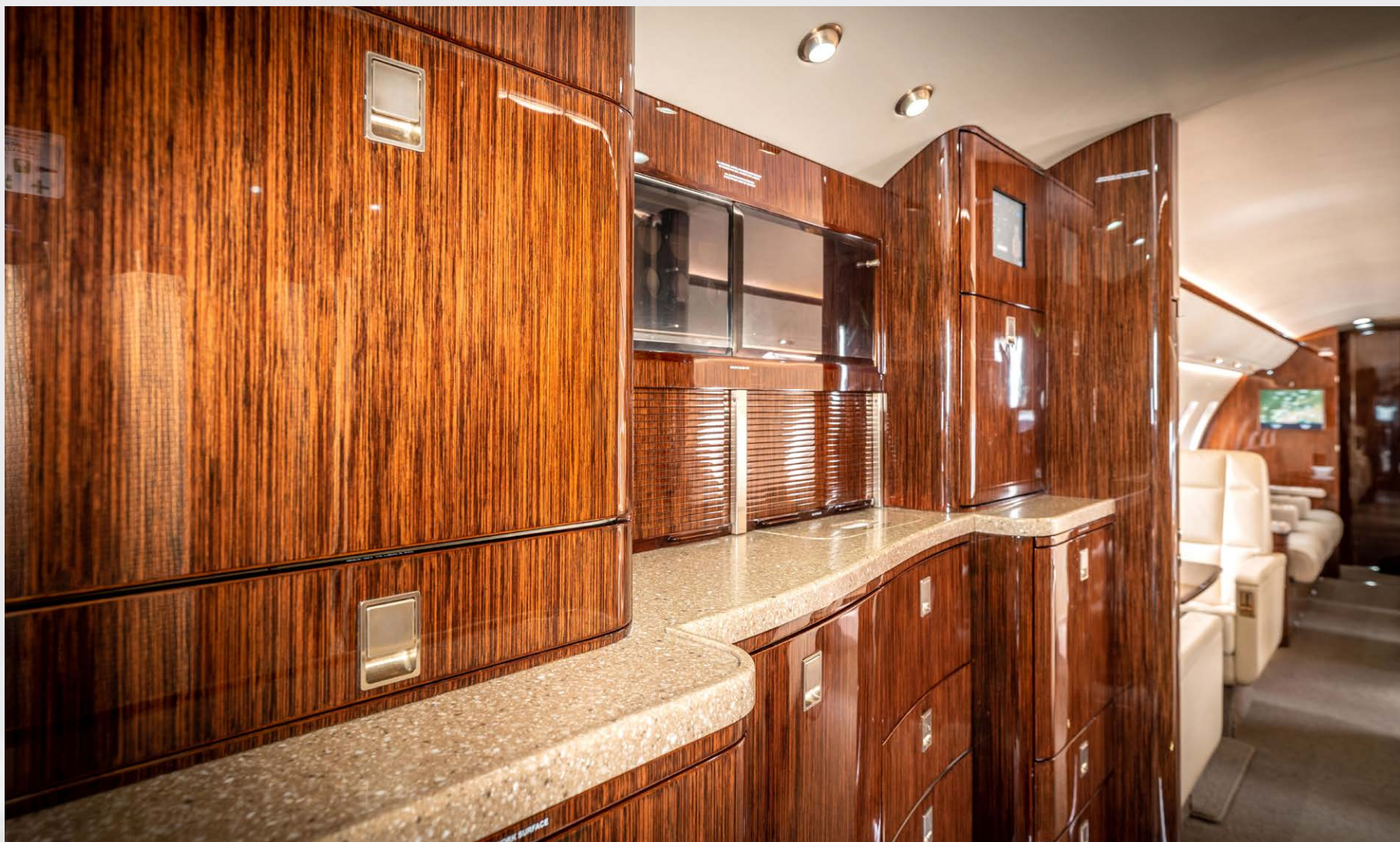


# 2009 Bombardier Challenger 605 S/N 5783





## 2009 Bombardier Challenger 605 S/N 5783





# 2009 Bombardier Challenger 605 S/N 5783



**JETCRAFT** 

[INFO@JETCRAFT.COM](mailto:INFO@JETCRAFT.COM) +1 919 941 8400 [JETCRAFT.COM](http://JETCRAFT.COM)

Specifications and/or descriptions are provided as introductory information only and do not constitute representations or warranties. Verification of specifications remain the sole responsibility of purchaser. Photographs and images may have been modified to remove logos, registration marks, or other identifying information to protect the privacy of the Aircraft's current owner. The Aircraft is subject to prior sale, lease, and/or removal from the market without prior notice.



# 2009 Bombardier Challenger 605 S/N 5783



**JETCRAFT** 

INFO@JETCRAFT.COM +1 919 941 8400 JETCRAFT.COM

Specifications and/or descriptions are provided as introductory information only and do not constitute representations or warranties. Verification of specifications remain the sole responsibility of purchaser. Photographs and images may have been modified to remove logos, registration marks, or other identifying information to protect the privacy of the Aircraft's current owner. The Aircraft is subject to prior sale, lease, and/or removal from the market without prior notice.



# 2009 Bombardier Challenger 605 S/N 5783



INFO@JETCRAFT.COM +1 919 941 8400 JETCRAFT.COM

Specifications and/or descriptions are provided as introductory information only and do not constitute representations or warranties. Verification of specifications remain the sole responsibility of purchaser. Photographs and images may have been modified to remove logos, registration marks, or other identifying information to protect the privacy of the Aircraft's current owner. The Aircraft is subject to prior sale, lease, and/or removal from the market without prior notice.

# 2009 Bombardier Challenger 605 S/N 5783



**JETCRAFT** 

INFO@JETCRAFT.COM +1 919 941 8400 JETCRAFT.COM

Specifications and/or descriptions are provided as introductory information only and do not constitute representations or warranties. Verification of specifications remain the sole responsibility of purchaser. Photographs and images may have been modified to remove logos, registration marks, or other identifying information to protect the privacy of the Aircraft's current owner. The Aircraft is subject to prior sale, lease, and/or removal from the market without prior notice.



